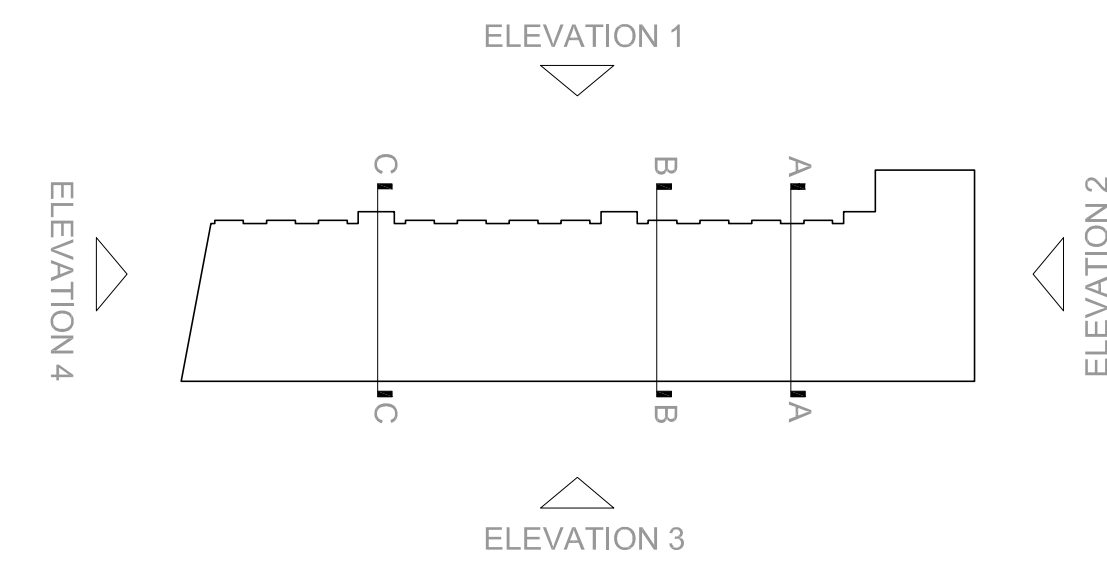
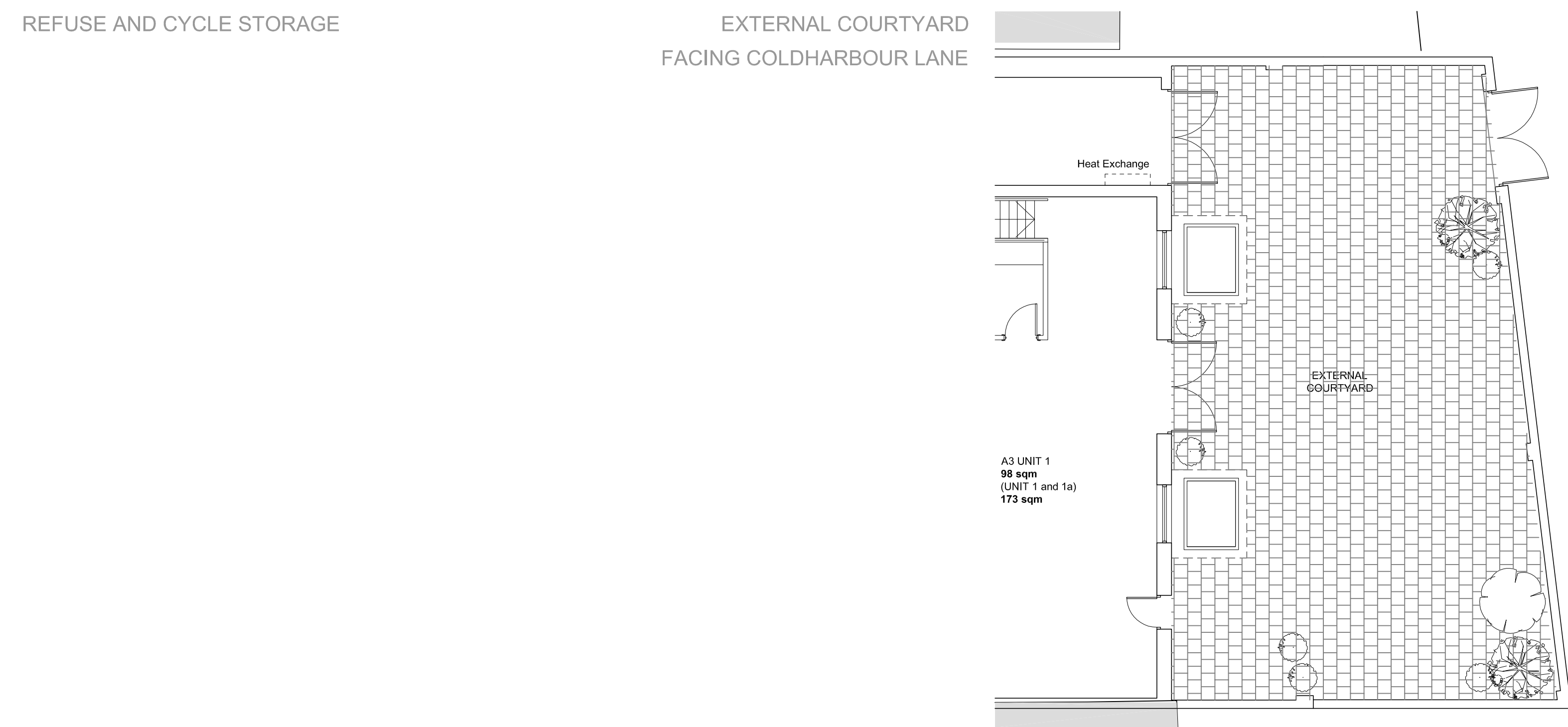
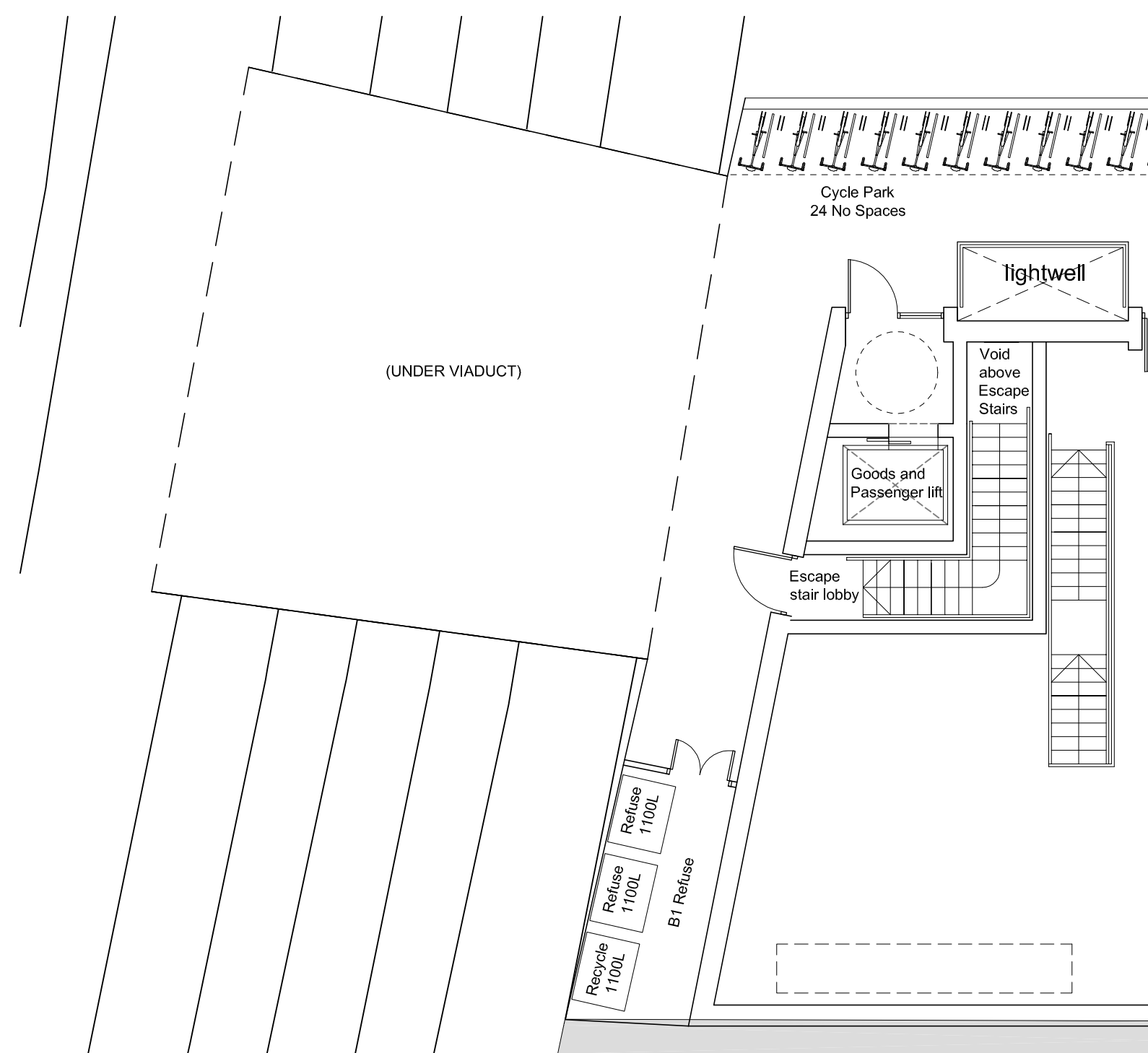
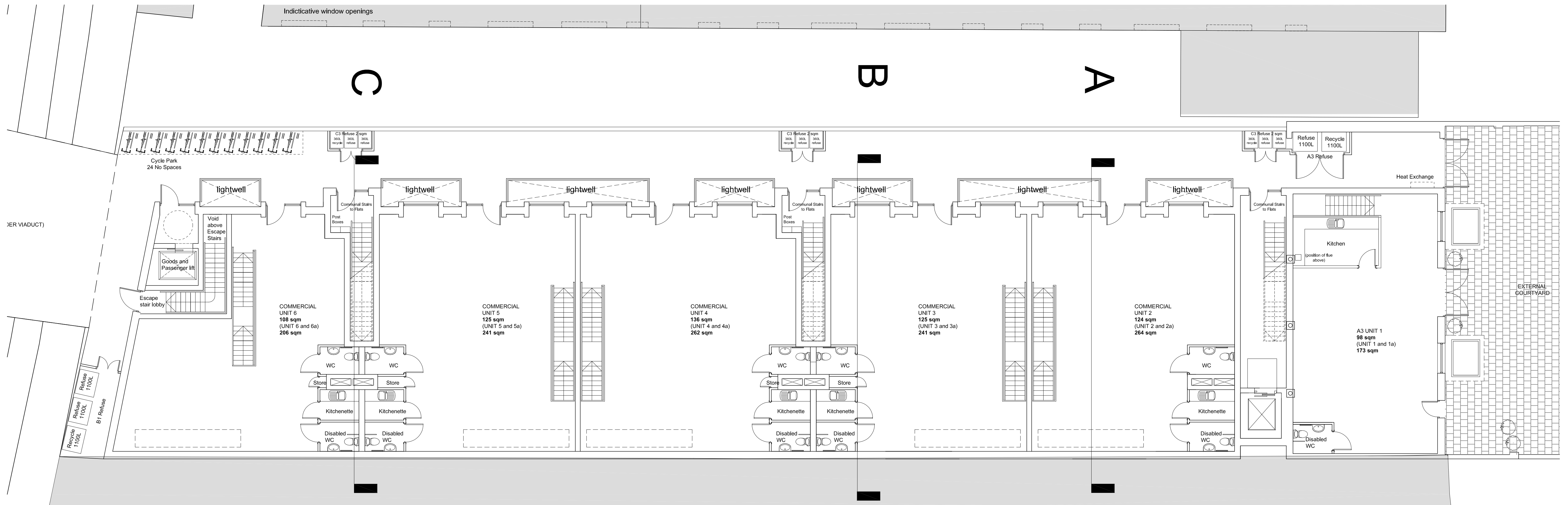


Note:  
All dimensions to be checked on site before the commencement of the work.  
If this drawing exceeds the quantities in any way the architects are to be informed before work is commenced.  
Do not scale this drawing.  
This drawing is copyright.



0 5 10m



rev.	date	description
P9	19.01.2015	General revision for comments
P8	10.12.2014	General revisions
P7	03.12.2014	Building extended towards viaduct
P6	11.11.2014	General revision
P5	07.11.2014	Ground floor layout changed
P4	15.10.2014	General revision
P3	22.09.2014	Revised to suit new commercial access
P2	30.07.2014	Roof lights aligned with upper floors
P1	29.07.2014	Ground floor layout changed Basement removed

PRELIMINARY **db** architects

Suite 5, 50 Churchill Sq,  
Kings Hill,  
West Malling,  
Kent ME19 4YU  
tel: 01732 523555  
email: darrenbland@dbarchitects.co.uk

job:  
Walton Lodge Laundry

drawing:  
GROUND FLOOR PLAN

date: 15th October 2014	scale: 1:100 @ A1	drawn: DB
client ref: LEX-0278	dwg. no.: 002	rev: P9